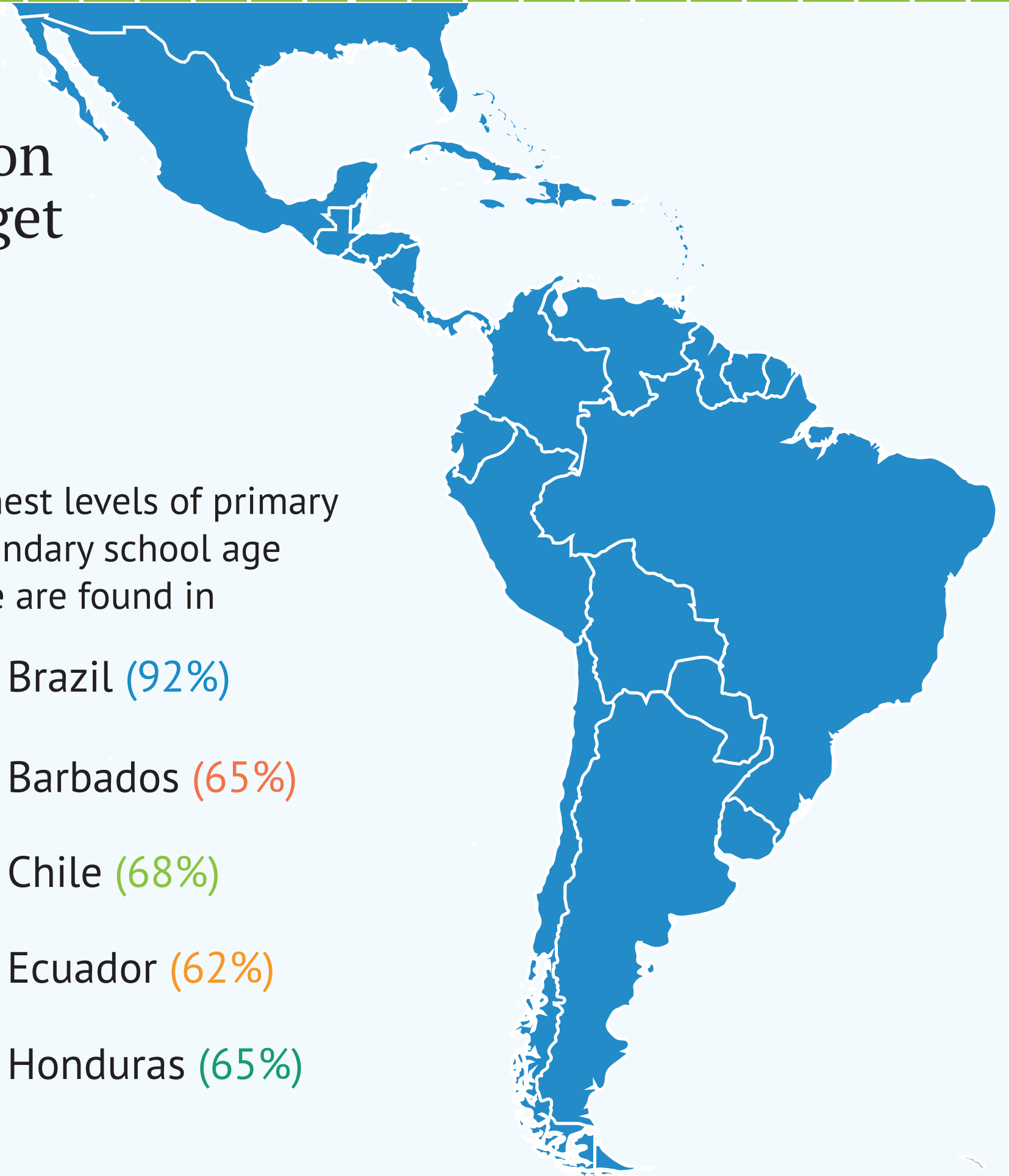


# global child nutrition

F O U N D A T I O N

## School Meal Programs in Latin America & the Caribbean

 **\$3.65** Billion Budget



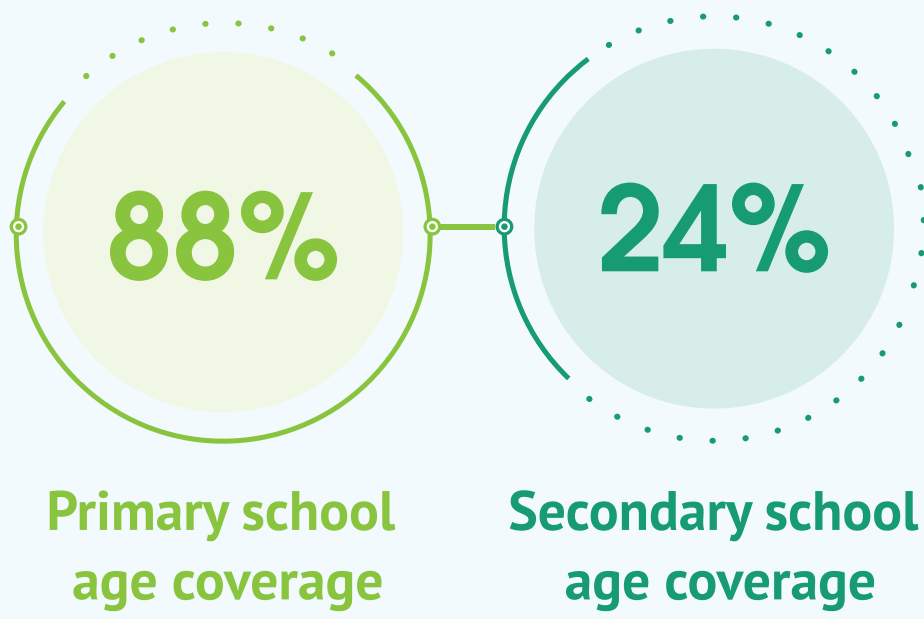
### COVERAGE

**55%** of primary and secondary school age children benefit from school feeding programs, a higher coverage rate than any other region.\*






**63** million children received some food through their schools.

Statistics reported here cover

**23** of the countries in Latin America and the Caribbean, which together hold



The highest levels of primary and secondary school age coverage are found in

-  Brazil (92%)
-  Barbados (65%)
-  Chile (68%)
-  Ecuador (62%)
-  Honduras (65%)

**80%** of the population of the region.

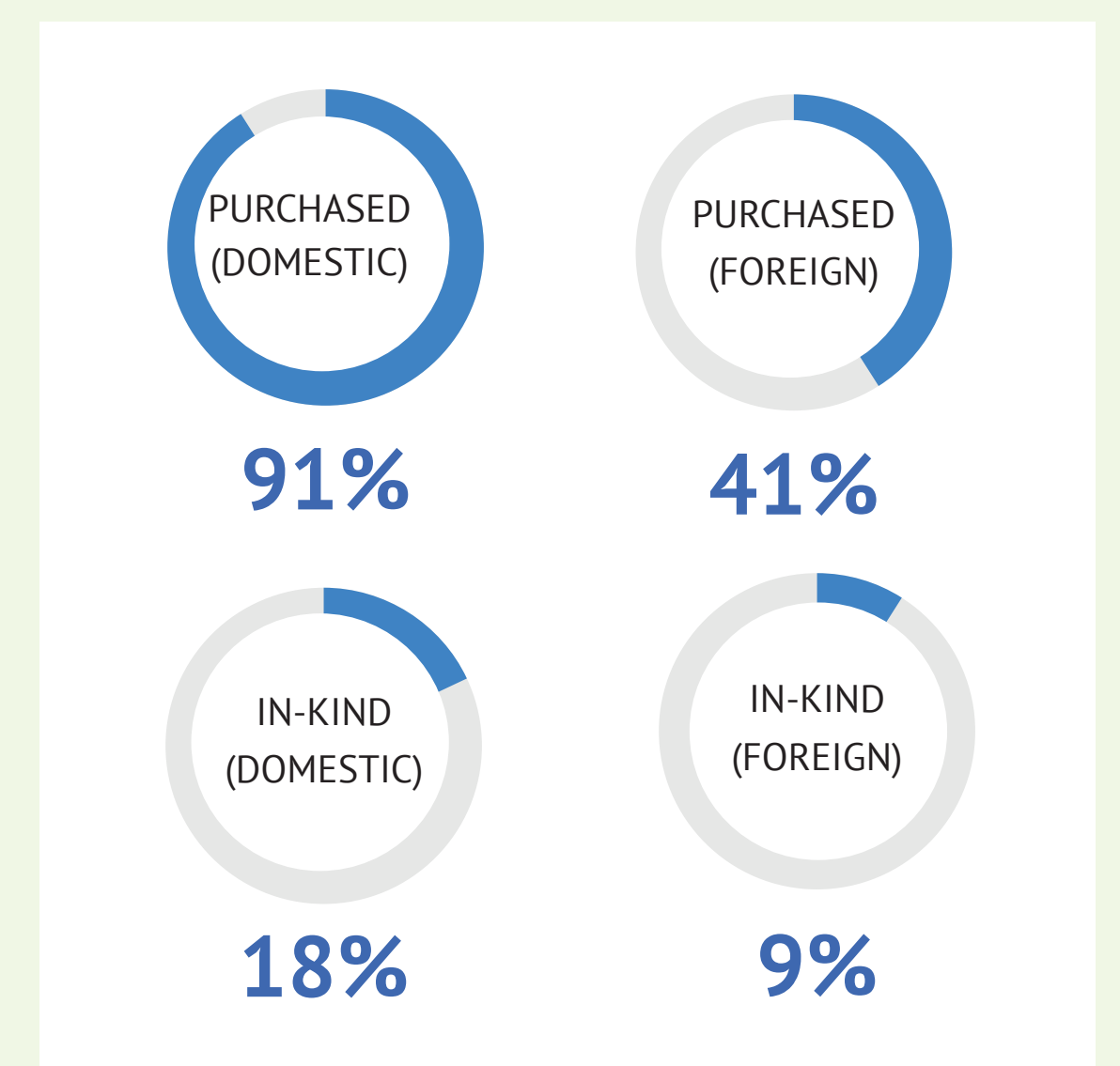
## COUNTRIES WITH NATIONAL LAWS, POLICIES, OR STANDARDS RELATED TO SCHOOL FEEDING

### Dedicated Line Item in National Budgets

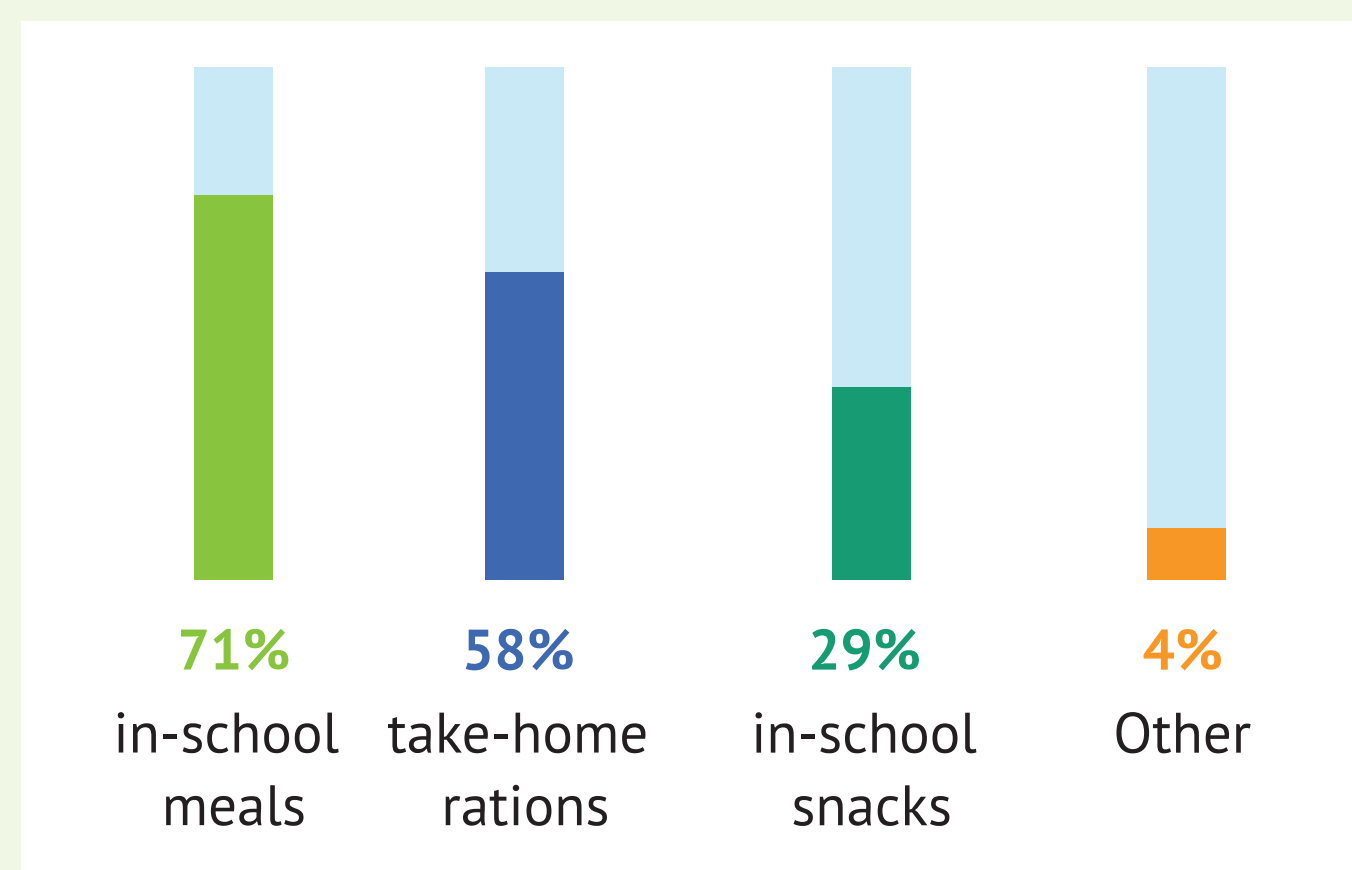
There is often a positive relationship between having a dedicated line item and the coverage of school feeding.



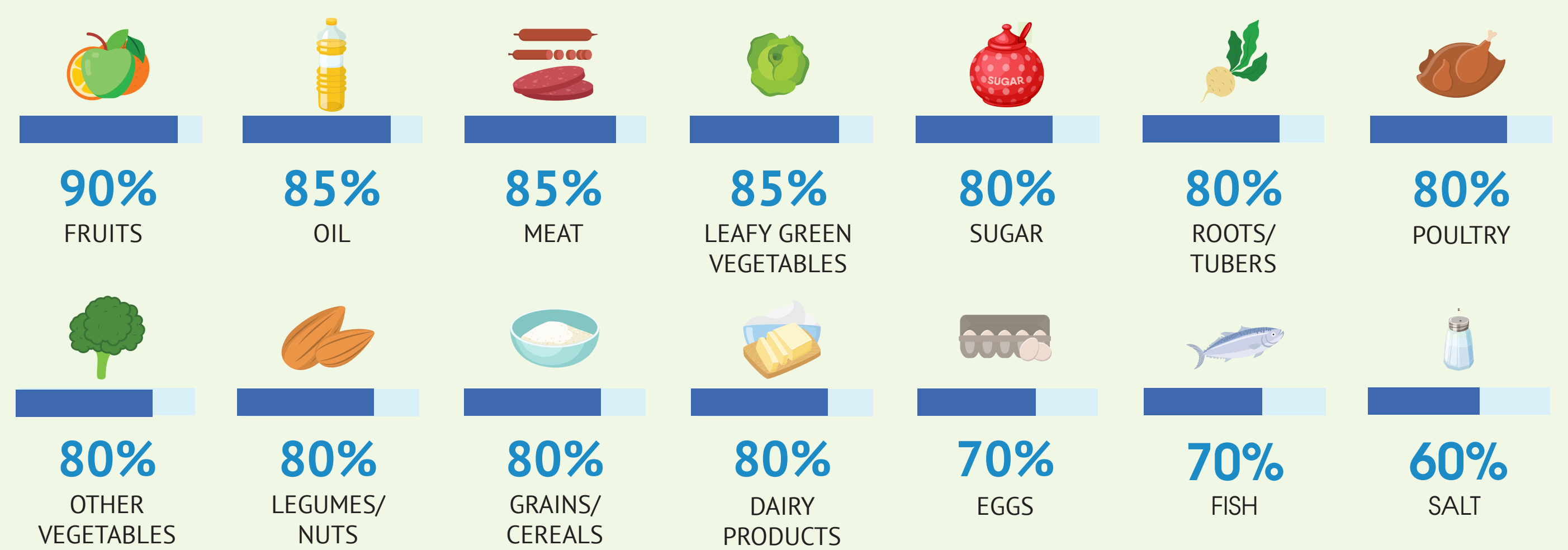
## FOOD SOURCES (% of programs)



## METHODS OF FOOD DISTRIBUTION (% of programs)



## FOOD BASKET (% of programs)



## INVOLVEMENT OF FARMS

**83%** of programs engage farmers in school feeding programs, higher than in any other region\* of the world.

### EXAMPLES:

**In Brazil**  
100% of food is procured domestically, with a minimum of 30% purchased from small-scale family farmers.

**In Guatemala**  
family farmers are prioritized in food procurement.

**In Chile**  
some school food must be purchased from peasant family farmers or other local producers, with the value ranging from 3.5%–5.25% across different territories.

**In Ecuador**  
at least 30% of school food must be purchased from vulnerable sectors of the population, and from micro, small, and medium-sized enterprises.

**In Saint Kitts and Nevis**  
members from the School Meals Establishment, the Central School Farm, the Department of Agricultural, and the Ministry of Health oversee school feeding activities.